

## 7 – HOW TO WORK WITH UNIFLOW-200 QUESTIONNAIRE

### 7.1 Introduction

To discover the requirements of the Customers in their specific application against the flow computer, Process Control send a questionnaire to Customer.

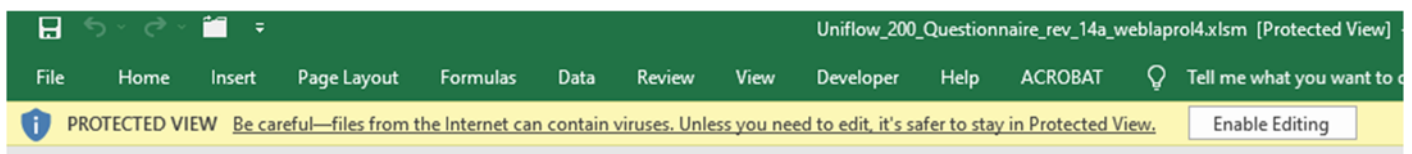
The questionnaire is a macro enabled Excel file. Its name is Uniflow\_200\_Questionnaire\_rev\_YY.xlsm, where YY is the current version number.

As a safety measure Windows usually blocks the content of the xlsx file if it is received from another computer.

This document describes how to work with questionnaire if its content is blocked.

### 7.2 Unblocking the questionnaire file

We suppose you saved the questionnaire file to your computer hard drive. When you open it, you will see on the top of the window this warning text "PROTECTED VIEW Be careful..." as shown on the picture below.



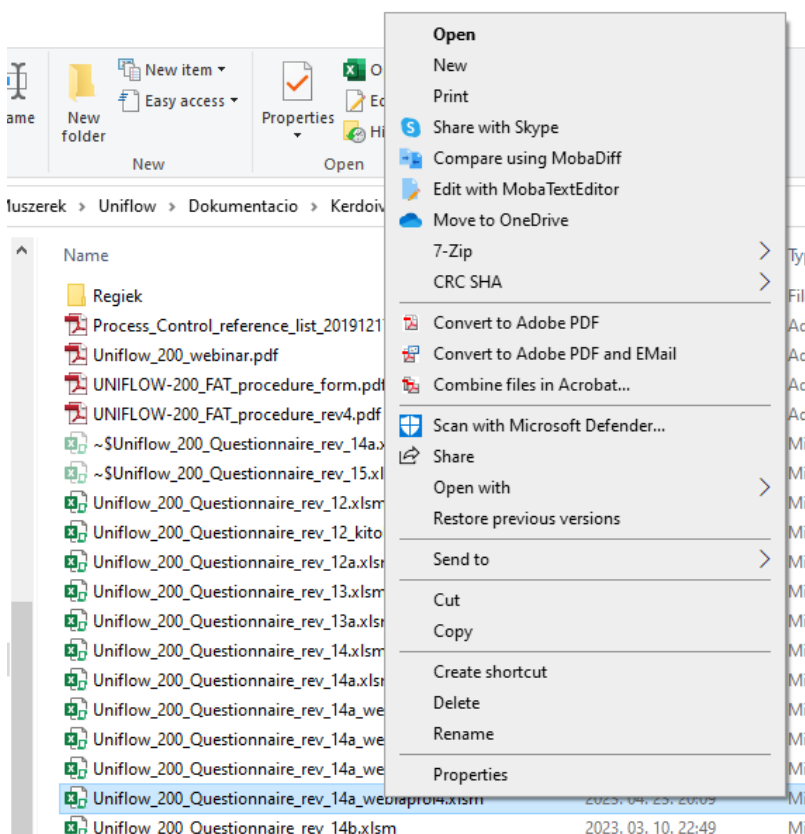
To unblock it follow the steps below.

#### 7.2.1 Close the questionnaire file without saving

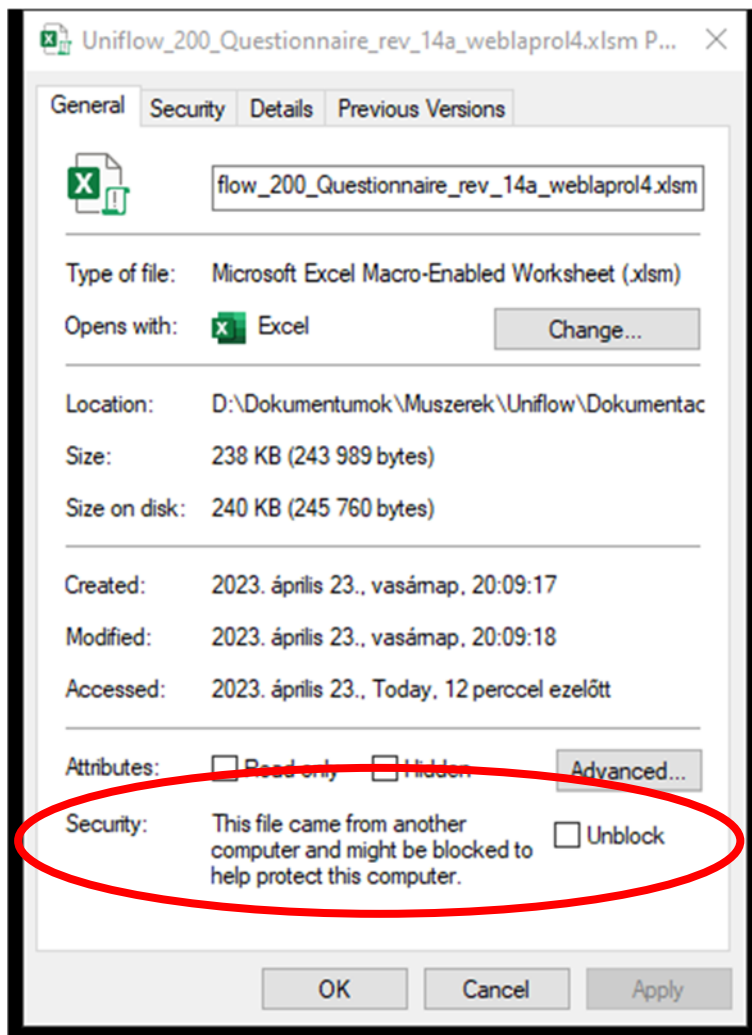
#### 7.2.2 Open the Properties window of the file

In File Explorer go to the directory where you saved the questionnaire file.

Highlight the name of the file and right click with your mouse while the cursor is on the top of the file name. Select the Properties menu item from the menu list appearing as shown on the picture below.



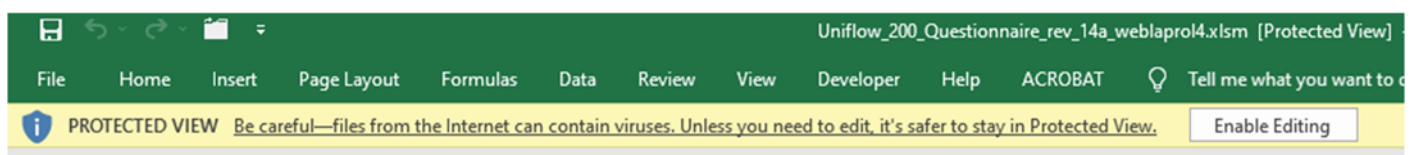
Properties window appears. On the lower part of the window you see security message highlighted on the picture below.



Tick the Unblock check box and click the OK button.

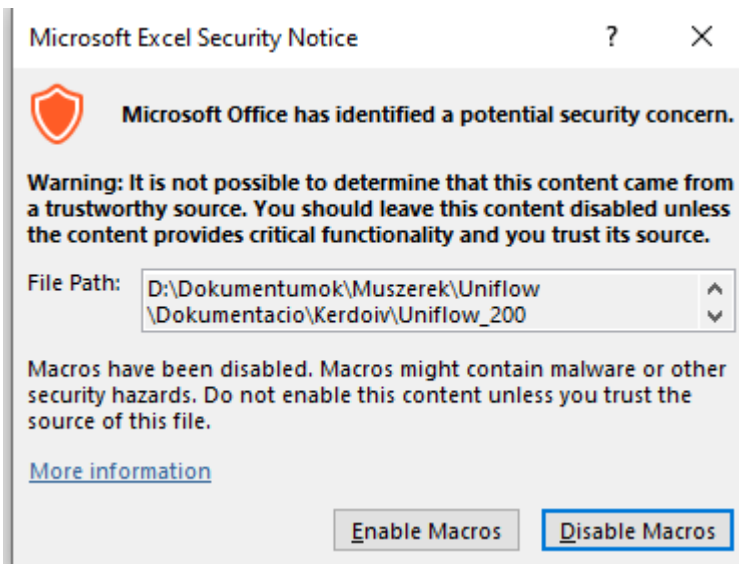
### 7.2.3 Open the unblocked file

Now open the questionnaire. You still will see the warning message like on the picture below.



Click the Enable Editing button.

Another message box appears with buttons Enable macros and Disable macros as shown below.



Click the Enable Macros button. After this step you are able to fill out the questionnaire.

#### 7.2.4 Work with the file

Fill out the green cells with the information requested.

Click the "Define stream 1." button and select the options you need in the flow computer.

Go to stream 2., stream 3, etc. if more than one stream is required.

Click the Define extra features button to set up any special requirements.

If you want to add any further request, write it into the cell Any other additional information.

#### 7.2.5 Send the questionnaire back to Process Control